

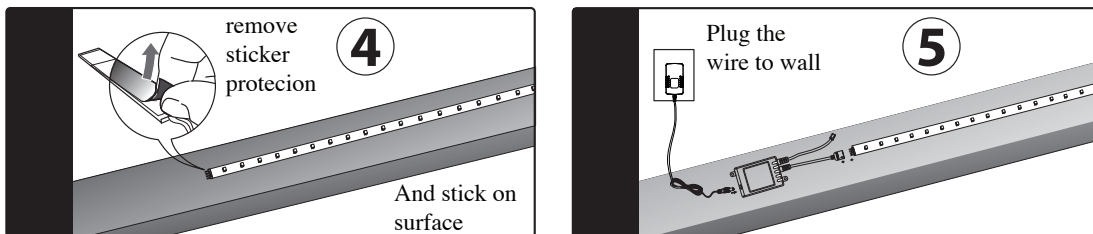
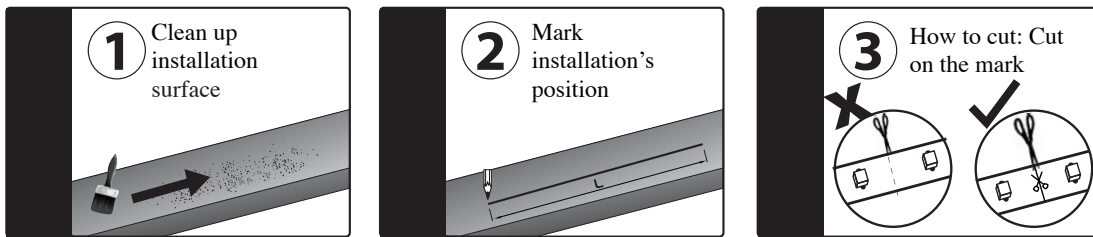
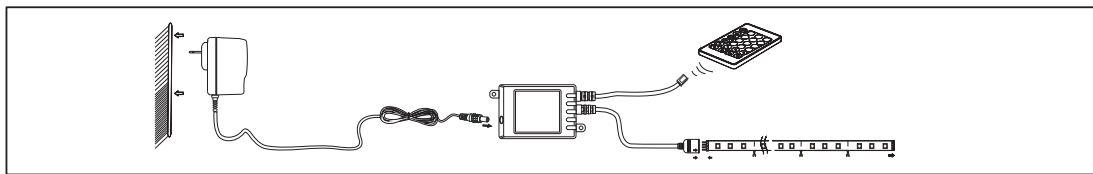
16 COLOR LED STRIP

UNL-12W-4RGB

Please read instructions completely before beginning installation.
Save these instructions for future reference.

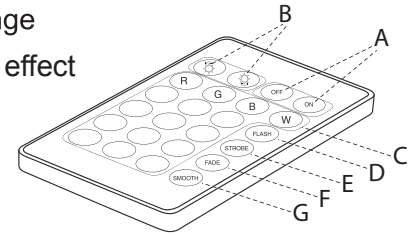
Important Safety Instructions

1. Consult a local licensed electrician or electrical contractor if you are not sure about the installation.
2. All electrical connections must be in accordance with electrical codes in effect in your region.
3. Do not use in wet locations. This product is not intended for lighting of aquariums.
4. Indoor use only.
5. Route and secure the power supply cable so that it will not be pinched or damaged.
6. Use only insulated staples or plastic ties to secure supply cable, do not damage the cable.
7. The strip light is not suitable for dimmers and electronic switches.

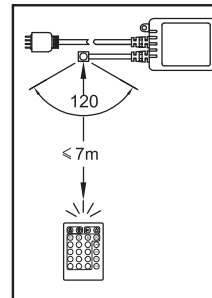


Remote control

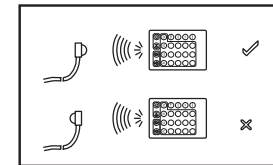
- A) Button On/Off Switch
- B) Bright key. It can increase or decrease the color brightness. And it can slow down or accelerate the color change.
- C) R,G,B,W : Choose Color. Red, Green, Blue, White.
- D) Flash key: 7 colors flash change
- E) Strobe key: Strobe white light effect
- F) Fade key: Gradual change of 16 colors(loop)
- G) Smooth key: Slow alternate color change only(R,G,B 3 colors)



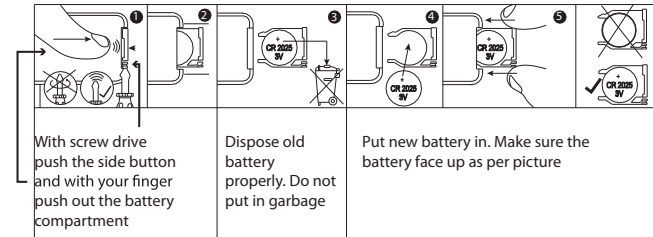
Detection range
= less than 7m



Sensor installation

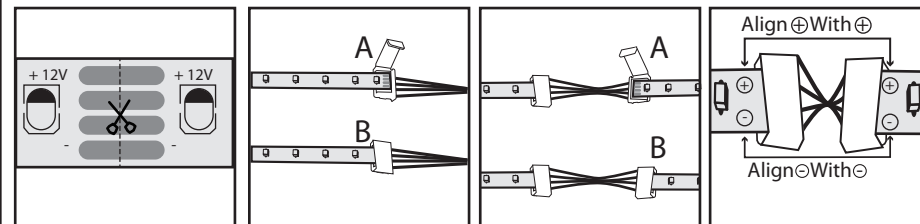


Battery replacement: Type CR2025-3V



Installation of Connector Strips

1. One cut the strip at the designated place
 2. Open the connector (A) and snap them on the strip(B).
 3. Open the end connector (A) and snap it on the extension of the strip(B).
- Important reminder:** you must align the positive with positive, negative with negative



QUESTIONS?
E: info@nadair.com
Tél: 1 (800) 776-7891
www.nadair.com



NADAIR
since 1980
IS-UNL-12W-4RGB