



**ST SERIES
HIGH PERFORMANCE**

290 mm / 11.42"



495 mm / 19.48"

Depth
290 mm / 11.42"



Technical Information

Airwatts	600
Suction	140.9" H ₂ O
Airflow	127.1 CFM
Noise Level	62 dB
Canister	18L / 4.75 Gal.
Motor Size	5.7" / 145 mm
Motor Type	Thru-Flow
Motor Fan	2-stage
Motor SKU	MOT-288
PC Board SKU	6114-19C2
Soft-Start/Stop	No
Top Load	Yes
Depth	290 mm / 11.42"
Height	495 mm / 19.48"
Width	290 mm / 11.42"

With a disposable filtration bag only

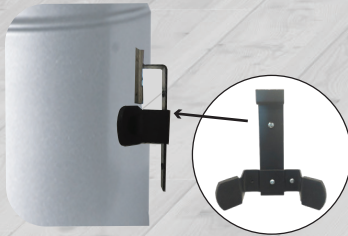


Disposable filtration bags (3-pack)
12.5L / 3.2 Gal.
FD-12.5L-3NAD



Mandatory permanent protective filter (Rinse only)
FILP-CDO-VAC

Wall mounting bracket
MUSUP-SD-V1



Special Features

HIGH PERFORMANCE MOTOR

AMETEK
2-stage/5.7"

Reliable and efficient

DISPOSABLE FILTRATION BAG ONLY

3-Layer disposable bag / Better filtration

SIDE INTAKE PIPE

Easy to install on existing piping network

LED INDICATOR

Displays the status of the unit

COMPACT

Designed to fit perfectly in narrow spaces