

SUPER DUTY PEERLESS PERFORMANCE



438.15 mm / 17.25"



946.4 / 37.26"

Depth
336.6 mm / 13.25"

Technical Information

Airwatts	710
Suction	151.9" H ₂ O
Airflow	137.1 CFM
Noise Level	71 dB
Canister	32L / 8.45 Gal.
Motor Size	8.4" / 213.36 mm
Motor Type	By-pass
Motor Fan	2-stage
Motor SKU	MOT-501
PC Board SKU	6114-19HF2
Soft-Start/Stop	Yes
Bottom Load	Yes
Depth	336.6 mm / 13.25"
Height	946.4mm / 37.26"
Width	438.15 mm / 17.25"

CYCLONIC SELF-CLEANING SYSTEM With or without a disposable filtration bag

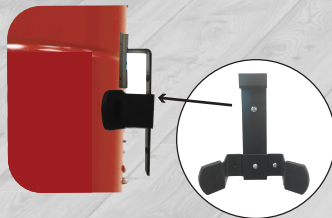


Disposable filtration bags (3-pack)
45L / 11.89 Gal.
FD-45L-3NAD



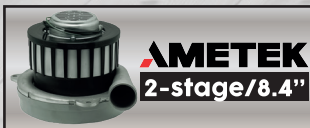
Mandatory true HEPA self-cleaning filter (Rinse only)
FILP-SF

Wall mounting bracket
MUSUP-SD-V1



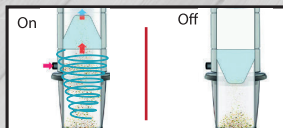
Special Features

COMMERCIAL GRADE MOTOR



Infinity brushes
1500+ Hours

CYCLONIC SELF-CLEANING SYSTEM



True HEPA filtration
Filters up to 99.99%

DUAL AIR INTAKE



Easy to install on
any existing network

LED INDICATOR



Displays the status of the
unit and a reminder to
empty the canister

POLISHED ALUMINUM



Impeccable standards

NADAIR®

Since 1980

SIMPLIFIED LIFE!

NASP-SD710-32SF-EN-11-04-2024