

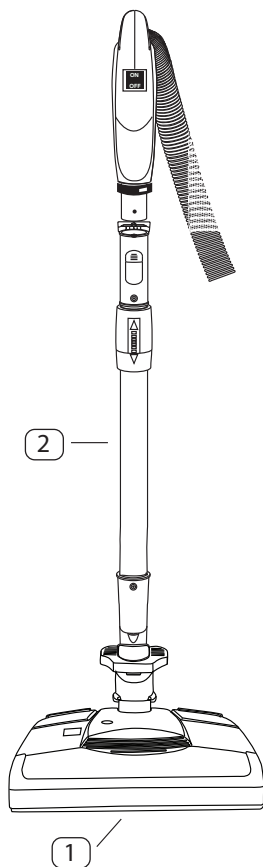


MODEL / MODÈLE ACC-028-WH

INSTRUCTION MANUAL AND USER GUIDE

Mode d'emploi et manuel de l'utilisateur

PARTS OVERVIEW



PARTS LIST

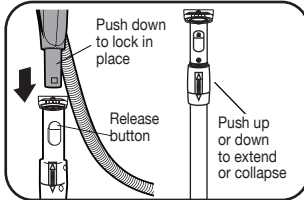
- 1 Electric power nozzle
- 2 Electric extension wand

TECHNICAL INFORMATION

Model: ACC-028-WH
Power supply: 120 V - 60 Hz -12A
Electric Floor Brush: 200W

ASSEMBLING THE ELECTRIC POWER NOZZLE AND EXTENDABLE WAND

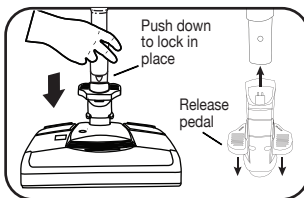
Fig.1



ELECTRIC EXTENSION WAND AND NOZZLE

Insert the stub tube of the handle into the electric wand by pushing the handle into the electrical wand. A click will confirm it is locked into place. To remove the handle push in the release button and pull upward. To extend or shorten the extension wand, push downward or pull upward as directed by the arrows on the extension handle. See Fig. 1

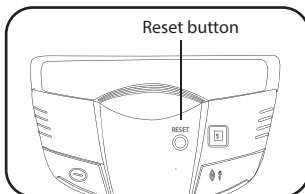
Fig. 2



The electric floor power nozzle is attached in the same manner by pushing the electric wand into the power nozzle. Be sure the electric nozzle is locked in place. To remove the electric power nozzle, place your foot on the release pedal and pull up on the electric extension wand to release. See Fig. 2

USING YOUR ELECTRIC POWER NOZZLE

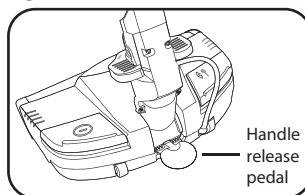
Fig. 3



ELECTRIC POWER HEAD

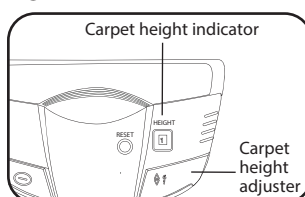
The electric nozzle has reset button located on top of the power nozzle (see Fig.3). This protection feature is designed to shut-off the electric power nozzle in case of a jam. If the electric power nozzle shuts off, clear the jam in the rotating brush and push the reset button. If the electrical power nozzle does not start after clearing the jam and pushing the reset button, contact your Nadair authorized dealer, service center or customer service at 1 (800) 776-7891 or by email at info@nadair.com. See Fig. 3

Fig. 4



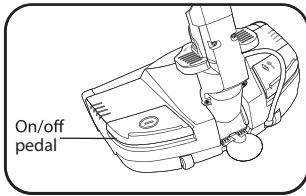
There are two (2) handle positions for the electrical power nozzle, upright/stored and operational. When in the upright / stand position, the handle is locked into place. To lower the handle to the operating position, push the handle release pedal. See Fig. 4

Fig. 5



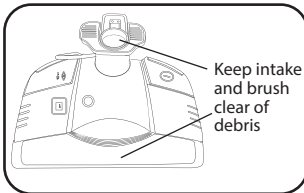
The carpet height adjuster has a range of 1 to 6 and can be adjusted according to the surface being cleaned. **Always adjust going up (from 1 to 6) until you reach the desired setting.** When adjusting down (from 6 to 1), the adjuster is designed to skip numbers to return to 1 faster. Adjust by pressing the foot pedal located on the rear of the electrical power nozzle. See Fig. 5

Fig. 6



Turn on or off the electric power nozzle by pushing the on/off pedal. This allows the user to turn on and off the rotating brush depending on the surface being cleaned. If cleaning rugs or carpet turn on the rotating brush. If cleaning hard surfaces such as wood or ceramic floors you can turn off the rotating brush. Make sure the brush is turned off before vacuuming on hard surfaces. See Fig. 6

Fig. 7

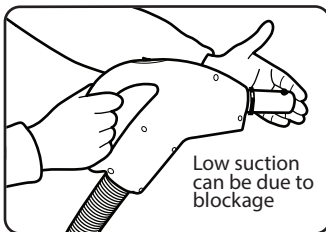


Always check to make sure the rotating brush is clear and free of any pet hair or debris. Remove and clean any built up debris from the rotating brush. Also make sure the electric power nozzle intake is free and clear of any debris. A clogged intake will reduce the vacuum efficiency and could damage the belt, power nozzle and void the warranty. See fig. 7

Note: The rotating brush uses a specially designed drive belt. In the case that the drive belt should break due to over stress or a brush jam, contact a Nadair authorized dealer, service center or customer care at 1 (800) 776-7891, info@nadair.com or www.nadair.com.

MAINTENANCE AND STORAGE

Fig. 8



Low suction or poor pick up can be due to a blockage or restriction in the hose, handle, electric wand, power nozzle or cleaning tools. Check each part until the blockage or restriction is found and cleared.

With the vacuum turned on check the inlet for proper suction. If suction is low at the handle, clear the restriction in the hose handle, hose, dust filter bag inlet or change the filter bag. If the suction is 100% at the inlet then the blockage or restriction could be located in the handle electrical wand, power nozzle or cleaning tools. Locate and clear any blockage or restriction. See Fig. 8



WARNING: ALWAYS DISCONNECT THE POWER NOZZLE, HOSE AND VACUUM FROM THE OUTLET BEFORE MANIPULATING THE POWER BRUSH. RISK OF ELECTRICAL HAZARD.

Contact your Nadair authorized dealer, authorized service center or customer service at 1 (800) 776-7891 or by email at info@nadair.com for any question, technical information or problem with your Nadair product.

TROUBLE SHOOTING

PROBLEM?

If you have any issues, questions, or comments about your purchase, please do not hesitate to contact an authorized Nadair dealer, an authorized Nadair repair center, or Nadair customer service by email at info@nadair.com or by phone at 1 (800) 776-7891.

If you need parts, contact a Nadair authorized dealer, authorized repair center, or customer service by email at info@nadair.com or by phone at 1 (800) 776-7891.

IMPORTANT: Do not return to the place of purchase for warranty or repairs. Only Nadair authorized dealer or service center for repairs to keep the highest quality and ETL standards. Repairs or tempering by any other party will void your warranty.

TROUBLE SHOOTING

CHECK THESE FIRST Problems that appear to be major can often be solved easily. You can troubleshoot on your own by following the guide below:

Problem	Check	Solution
Power nozzle won't turn ON	• Hose power cord	• May not be properly connected. Plug hose firmly into the receptacle on nozzle.
	• Belt	• Belt may be worn or broken. Check and replace if necessary.
	• Switches	• Make sure surface selector switch and / or brushroll switch are both on.
	• Overload protector rest	• Make sure the overload protection button has been reset.
Power nozzle still does not operate properly	• Reviewed all the above	• Contact your Nadair authorized dealer, service center or our customer care at info@nadair.com or 1 (800) 776-7891.